



Diesel
Engine
Protection

Document: Installation Instructions
Version: 1
Status: actual
Author: mh **Date:** 18.06.01
Approved: wl **Date:** 18.06.01
File: PC-file

G4 Fuel shutoff solenoid valve



Tel.: +41-62-916 50 30
Fax: +41-62-916 50 35

Installation Instructions

1. Install the valve on a rigid, flat surface, immediately at the supply port of the fuel injection pump. The lock torque of the two fixation screws must be less than 13Nm. The max distance between valve outlet and fuelpump inlet should not exceed 200 mm.
2. As connection to, and away from the G4 valve flexible hoses are recommended. In case rigid steel pipes are used it is imperative that the sealing surfaces of the swivel fittings and the valve are well aligned in order to avoid valve body distortion when the fitting screws are tightened. Any distortion can cause valve failure.
In case the fuel is polluted, we recommend to mount an additional filter in between the tank and the fuel shut off valve.
3. The gaskets between swivel fittings, valve and screws should be either steel with bonded rubber insert (P/N 1 205 621), or softglown copper Ø 14.3 x 1.5 mm.

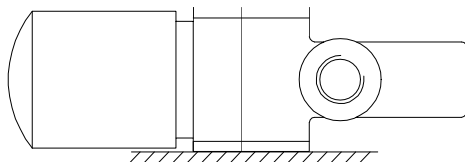
The following torque values must be applied:

For steel gaskets with rubber insert: 30 - 35 NM

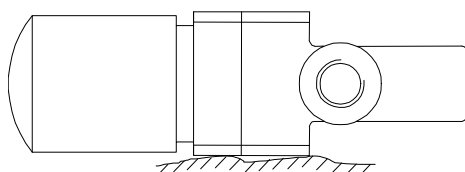
For softglown copper: 35 - 40 NM

After tightening all fittings test the valve by applying the supply voltage several times.

Mounting



Correct - flat base



Wrong - uneven base

Fittings with pipes must be aligned with the surfaces of the in- and outlets in order to avoid transverse force

